



Molecular Clouds associated with middle-aged gamma-ray Supernova Remnants W41 and G22.7-0.2



My ORCID QR

Takeru MURASE¹, Hidetoshi Sano¹, Hiroshi Takaba¹, Kohei Matsubara¹, Yasuo Fukui²

¹Faculty of Engineering, Gifu University, Japan, ²Department of Physics, Nagoya University, Japan

S2.16

Aims:

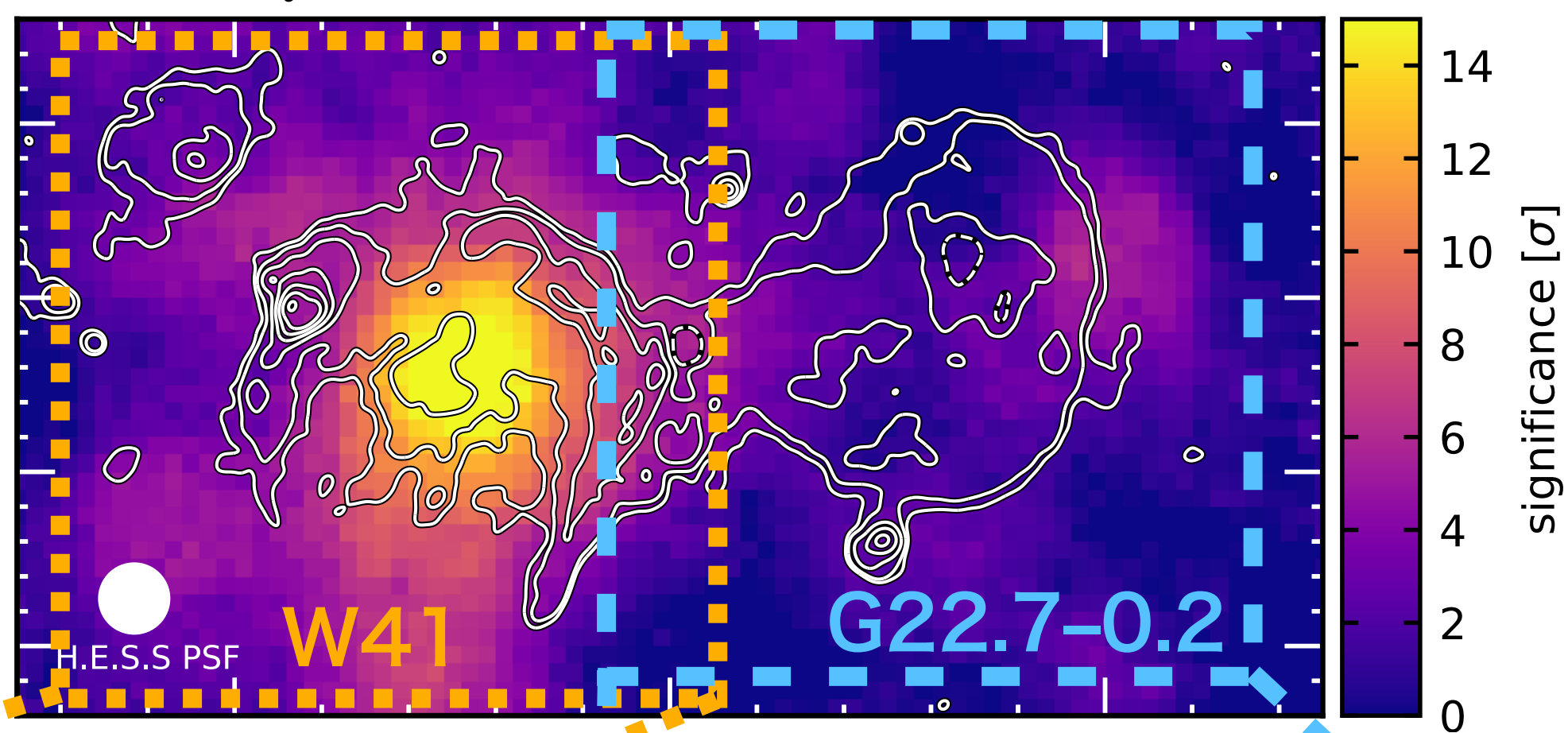
- Elucidation of the origin of cosmic ray (CR) acceleration in the our Galaxy
- A relation between the SNR age & the total energy W_p of the accelerated CRs

To do: Estimation of the W_p of middle-aged gamma-ray SNRs

Results:

- Molecular gases associated with SNR W41, G22.7-0.2 were identified and W_p was estimated.
- The age- W_p plots for these SNRs are consistent with the trends shown for the other SNRs.

Gamma Ray vs Radio continuum Contours: VLA 20 cm continuum



Gamma Ray vs Molecular line

