

Mysterious Odd Radio Circle near the Large Magellanic Cloud – An Intergalactic Supernova Remnant?

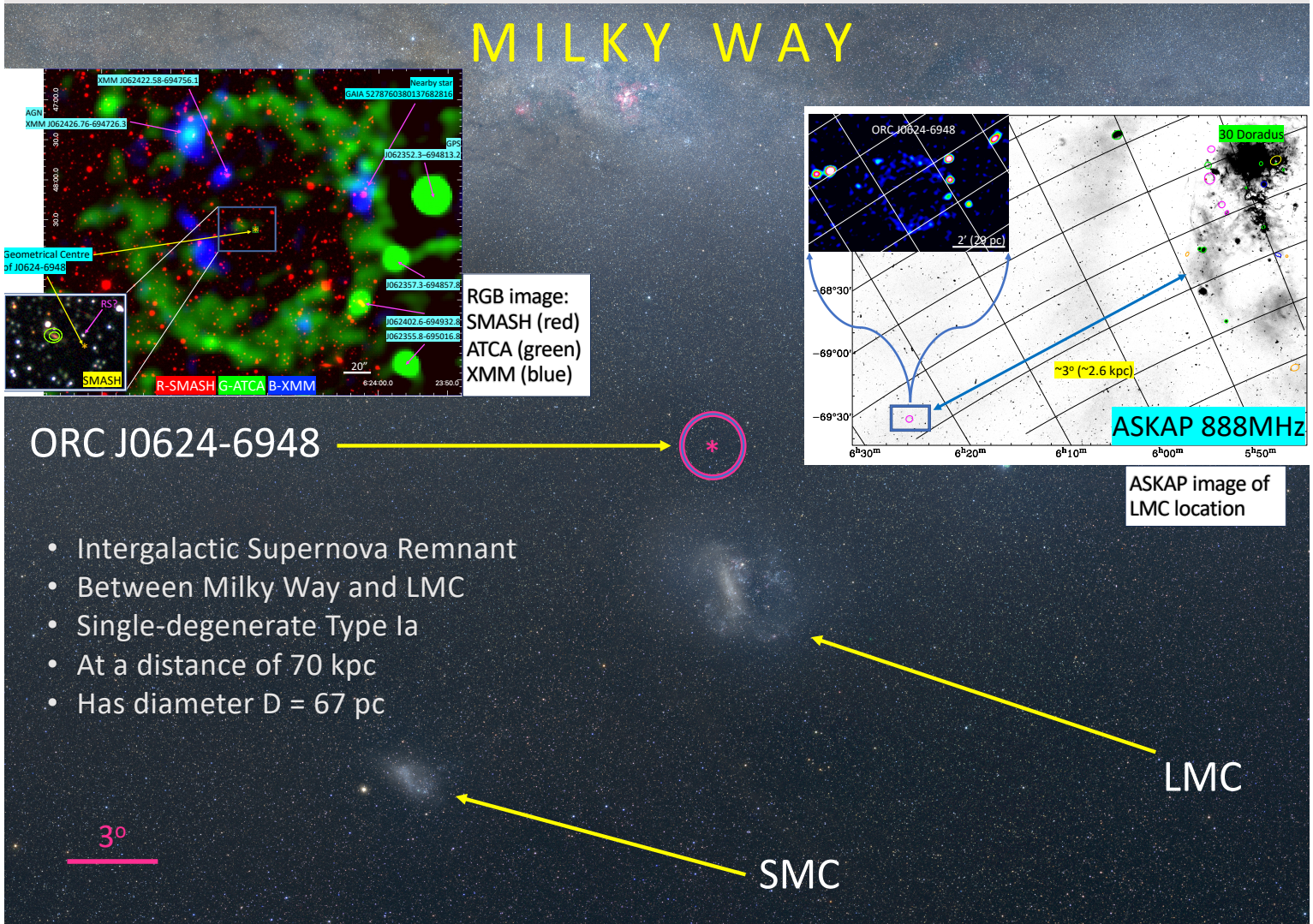
Miroslav Filipović¹, Manami Sasaki², Rami Alsaberi¹, Zachary Smeaton¹, and team

¹School of Science, Western Sydney University

²Dr Karl Remeis Observatory, Erlangen Centre for Astroparticle Physics

Email: m.filipovic@westernsydney.edu.au

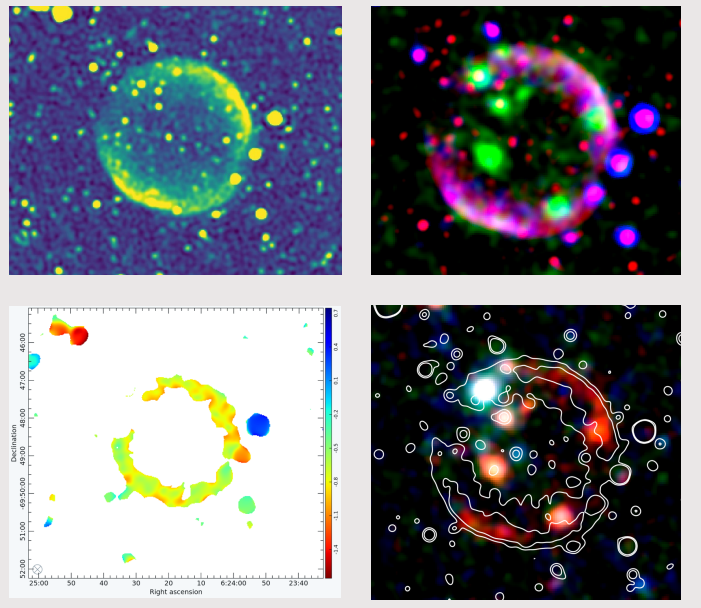
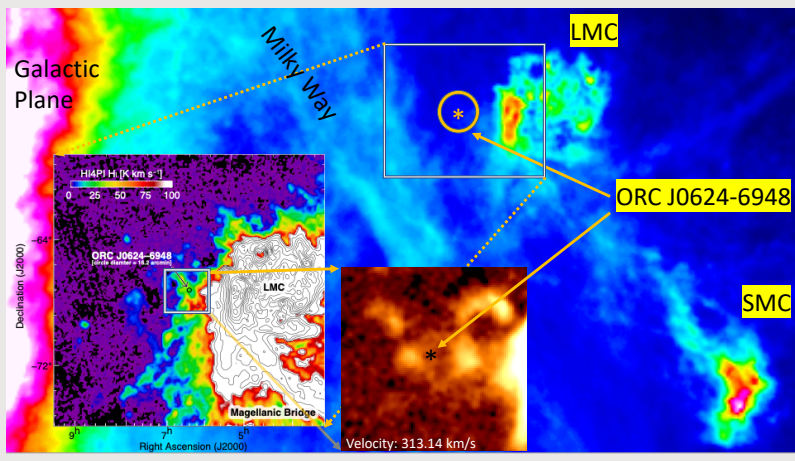
WESTERN SYDNEY UNIVERSITY



- Intergalactic Supernova Remnant
- Between Milky Way and LMC
- Single-degenerate Type Ia
- At a distance of 70 kpc
- Has diameter $D = 67$ pc

Optical (Top) and HI (Bottom) images of sky around J0624-6948

Top left: MeerKAT image (1250 MHz); Top right: RGB image, MeerKAT (red), Chandra (green), ASKAP (blue); Bottom left: Spectral index map; Bottom right: Chandra RGB image with radio contours



References

Filipović, M.D., et al., 2022, MNRAS, 512, 265–284

Sasaki, M., et al., 2024, in prep.

Acknowledgements

We acknowledge the Supernova Remnants III: An Odyssey in Space After Stellar Death conference for the opportunity to present our work, the Deutsche Forschungsgemeinschaft through project SA 2131/13-1, 2131/14-1, 2131/15-1, and the Australian Research Council (ARC) through grant DP200100784.